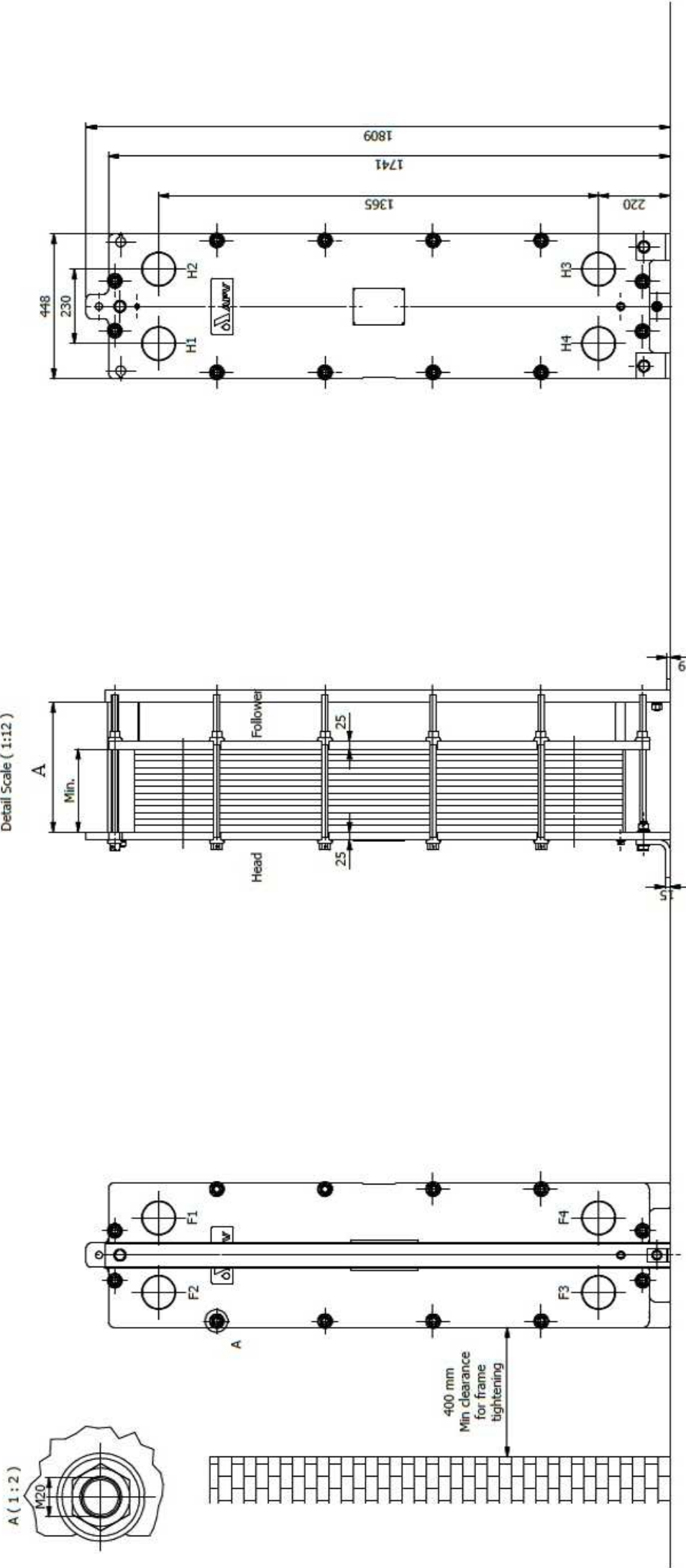
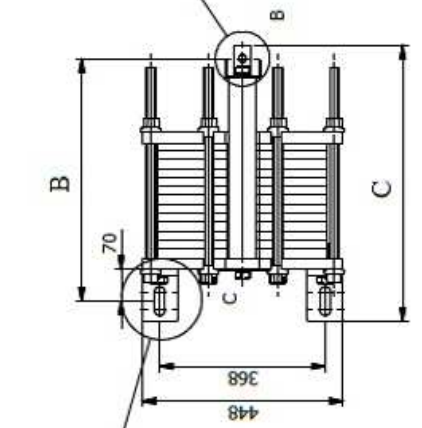
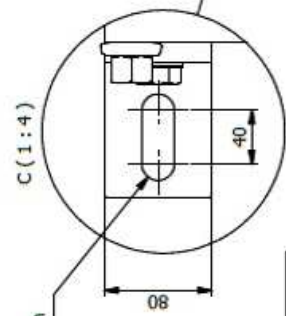


A (1 : 2)

Detail Scale (1 : 12)

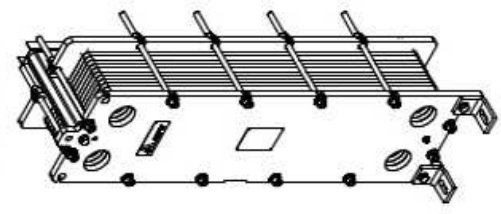


2 holes $\phi 24$ for bolting down



Hole $\phi 17$ for bolting down

Scale (1 : 20)



O050 MGS-10C			
Size	A	B	C
1	400	539	614
2	600	739	814
3	800	939	1014

General tolerance for foundation length ± 10 mm